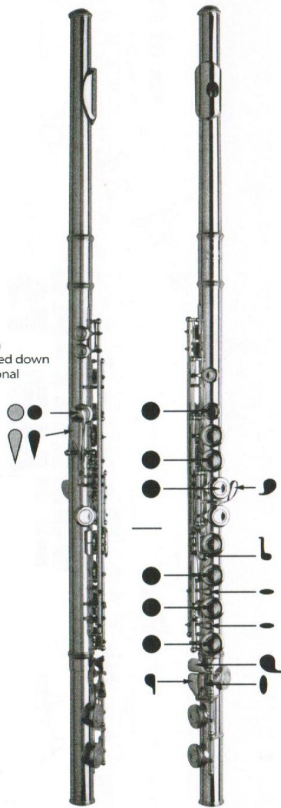


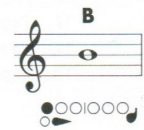
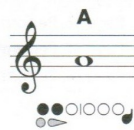
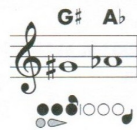
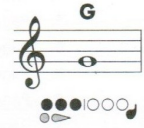
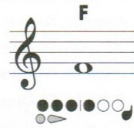
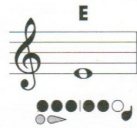
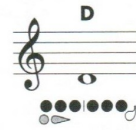
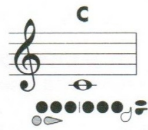
(901) 323-8888 or  
(800) 626-2676

[www.amromusic.com](http://www.amromusic.com)

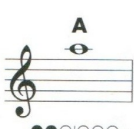
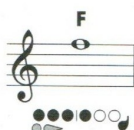
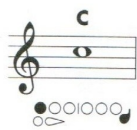
- = Open
- = Pressed down
- ◐ = Optional



Fingerings with gray thumb keys indicate that either thumb may be used for that note. Choose the best option for the line of music.



Lever key fingering is best



Lever key fingering is best for chromatic passages.

